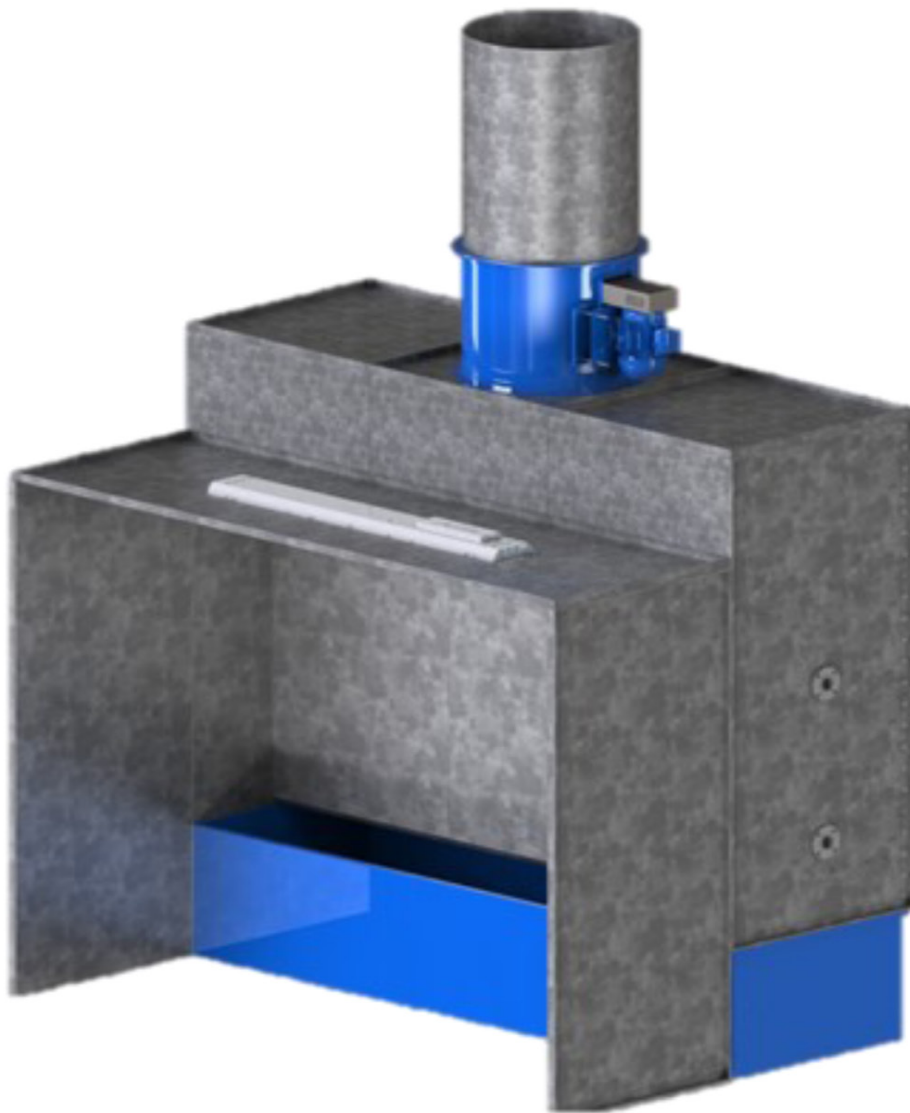
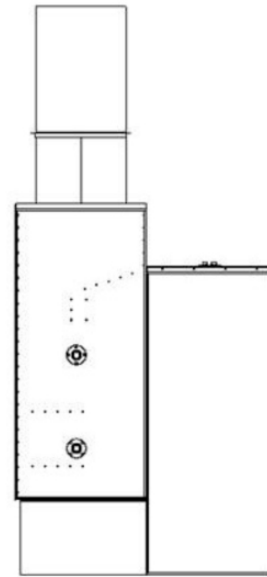
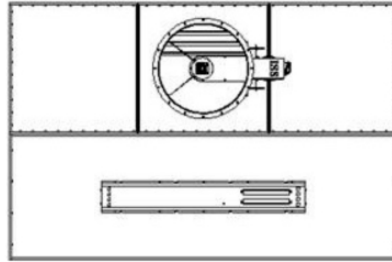
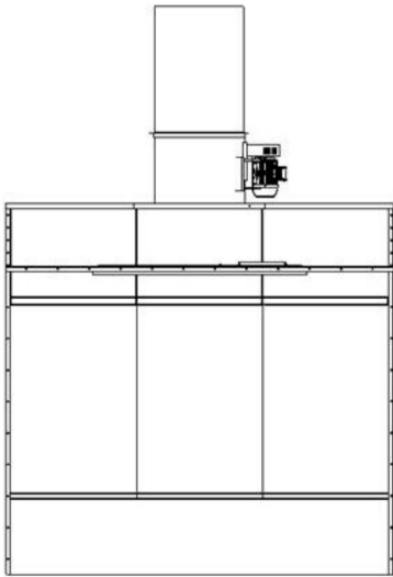


Surface Preparation and Finishing Solutions...

# Water Wash Spray Booth





| Model    | Internal Width (mm) | Extract Rate (m3/sec) | Duct Diameter (mm) | Motor Size (kW) | Booth Price (Ex-VAT / Ex-Works) | Extra Canopy Depth (Per 1m depth) |
|----------|---------------------|-----------------------|--------------------|-----------------|---------------------------------|-----------------------------------|
| PWW-1000 | 1000                | 1.58                  | 450                | 1.5             | £ 4,500.00                      | £ 100.00                          |
| PWW-2000 | 2000                | 3.15                  | 630                | 2.2             | £ 4,879.00                      | £ 110.00                          |
| PWW-3000 | 3000                | 4.73                  | 710                | 3.0             | £ 5,849.00                      | £ 135.00                          |
| PWW-4000 | 4000                | 6.30                  | 710                | 4.0             | £ 6,834.00                      | £ 140.00                          |
| PWW-5000 | 5000                | 7.88                  | 2 x 630            | 2 x 3.0         | £ 8,729.00                      | £ 160.00                          |
| PWW-6000 | 6000                | 9.45                  | 2 x 710            | 2 x 3.0         | £ 11,254.00                     | £ 180.00                          |

## Water Wash Spray Booths

Our standard water wash spray booths with axial flow extraction fans are constructed from high grade galvanised steel sheet that is cut and folded using the latest CAD/CAM technology to produce high quality panels with an exceptional level of fit and finish. A 3mm fully welded mild steel tank is dye penetrant tested to ensure water tightness prior to delivery.

All booths are supplied as standard with an internal working height of 2.25m and a

1m deep working canopy. They also come complete with fan, high quality pump and DOL starter.

Booths are supplied without ducting. However duct prices are available on request. Our standard fan is suitable for up to 1 length of ducting and 1 x 90 degree bend. Other ducting runs may require uprating of the fan and or motor.

Standard sizes are shown above; however custom sizes are available on request.

## Additional Extras:

- Glazed Lighting Unit: £150.00
- Filter Pressure Gauge: £100.00
- Powder Coated Finish (RAL9010): £150.00 per m width
- Fixed Booth Dividing Panel: £65.00 per m depth

## Contact us

Airblast Ltd, King Street Industrial Est, Langtoft, Peterborough, Cambs, PE6 9NF  
Tel 01778 560650 | Fax 01778 560724 | sales@airblast.co.uk | www.airblast.co.uk